

on-site in his London workshop) presents a selection of sapphire-lined necklaces and diamond-encrusted bracelets.

Other important European summer fairs include the 20th **Bamberg Art and Antiques Festival**, which runs from 21 July–21 August in the medieval cathedral town. Senger Bamberg Kunsthandel offers a carved linden wood relief, originally from a predella, depicting Jesus Christ and the Apostles (c. 1505) from the circle of Tilman Riemenschneider (a prolific medieval sculptor active in Würzburg from 1483). Further highlights include an impressive bureau with cupola, dating to 1828, at Kunsthandel Dr. Thomas Schmitz-Avila (Fig. 3) and, at Kunsthandel von Seckendorff, a Max Clarenbach landscape from 1910, which reveals the influence French Impressionism exerted on this German artist. In early August, **Art Nocturne Knocke** returns to the Belgian coast to celebrate its 40th edition (8–16 August), with an impressive array of objects spanning antiquity to the modern period: everything from a wooden polychrome statue of the Virgin and Child, carved in the Flemish centre of Mechelen in c. 1500 (De Pauw-Müller), to a Kees van Dongen panel painting from 1920 (Douwes Fine Art). A still life depicting chrysanthemums, this vivid work clearly carries traces of the Dutch artist's early Fauve days.

Heralding the start of the autumn season, **Tribal Art London** returns to the Mall Galleries for its second year (2–5 September). Nineteen international dealers, including four new participants, present a broad range of tribal and ethnographic works spanning the

3. Bureau with cupola, 1828, Flensburg, mahogany on softwood and ebonised wood, ht 245cm, Kunsthandel Dr. Thomas Schmitz-Avila at Bamberg Art and Antiques Festival



July/August Calendar

Bamberg Art and Antiques Festival

Various venues, Bamberg

21 July–21 August

www.bamberger-antiquitaeten.de

Point Art Monaco

Grimaldi Forum, Monaco

22–26 July

www.pointartmonaco.com

Jewels of the World Fair

Grimaldi Forum, Monaco

22–26 July

www.jw-fairs.com

Edinburgh Art Festival

Various venues, Edinburgh

30 July–30 August

www.edinburghartfestival.com

Art Nocturne Knocke

CC Scharpoord and Hotel

la Réserve, Knocke

8–16 August

www.artnocturneknocke.be

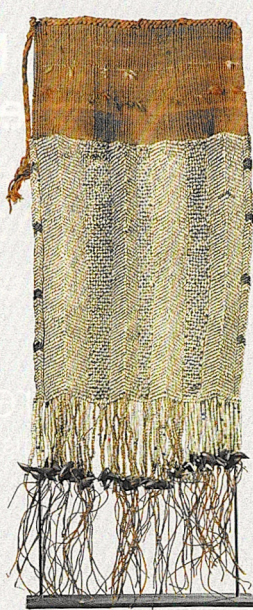
Tribal Art London

Mall Galleries, London

2–5 September

www.tribalartlondon.com

4. Ceremonial dance skirt, early 20th century, Admiralty Islands, South Pacific, beads made of snail shells, 60 x 32cm, Galerie Lemaire at Tribal Art London



Americas, Africa, Oceania, Australasia, and Europe. Newcomer Galerie Lemaire, one of the world's oldest tribal art galleries, shows a ceremonial dance skirt made out of snail shells from the Admiralty Islands (Fig. 4). Another first-time exhibitor, Kenn MacKay, offers a rare pair of Yoruba Ibeji (twin) figures from the Nigerian region of Oyo Ilorin. In traditional Yoruba culture, twins were highly regarded: if one died in infancy, it was symbolically replaced in the form of a wood figurine. Additional highlights include a 19th-century Chinese theatre mask at Adam Prout, and a 'Sande Society' Sowe wooden mask (c. 1900; Fig. 5) from Sierra Leone at David Malik. Usually donned during initiation ceremonies, such masks are examples of masquerades performed by women in parts of West Africa.

Finally, late summer in the UK sees the return of the 12th **Edinburgh Art Festival**, with its diverse programme of more than 40 exhibitions across 30 of the city's museums and galleries (30 July–30 August). Alongside major exhibitions of work by US artist John Chamberlain (Inverleith House) and Phyllida Barlow (Fruitmarket Gallery), the event also includes solo presentations of younger artists such as Beatrice Gibson (Collective) and Tara Donovan (Jupiter Artland). Celebrated Scottish painters John Bellany and Joan Eardley are the subject of exhibitions at Open Eye Gallery and the Scottish Gallery respectively, while Ingleby Gallery presents a major solo show by Charles Avery. Elsewhere, comprehensive surveys of Scottish art can be seen at City Art Centre and the Queen's Gallery. **A**

5. Mende Bundu 'Sande Society' Sowe Mask, c. 1900, Sierra Leone, wood, ht 37cm, David Malik at Tribal Art London

